



Anti-CD11b



A.

Anti- $\alpha 1\beta 1$  integrin



B.

Figure 1

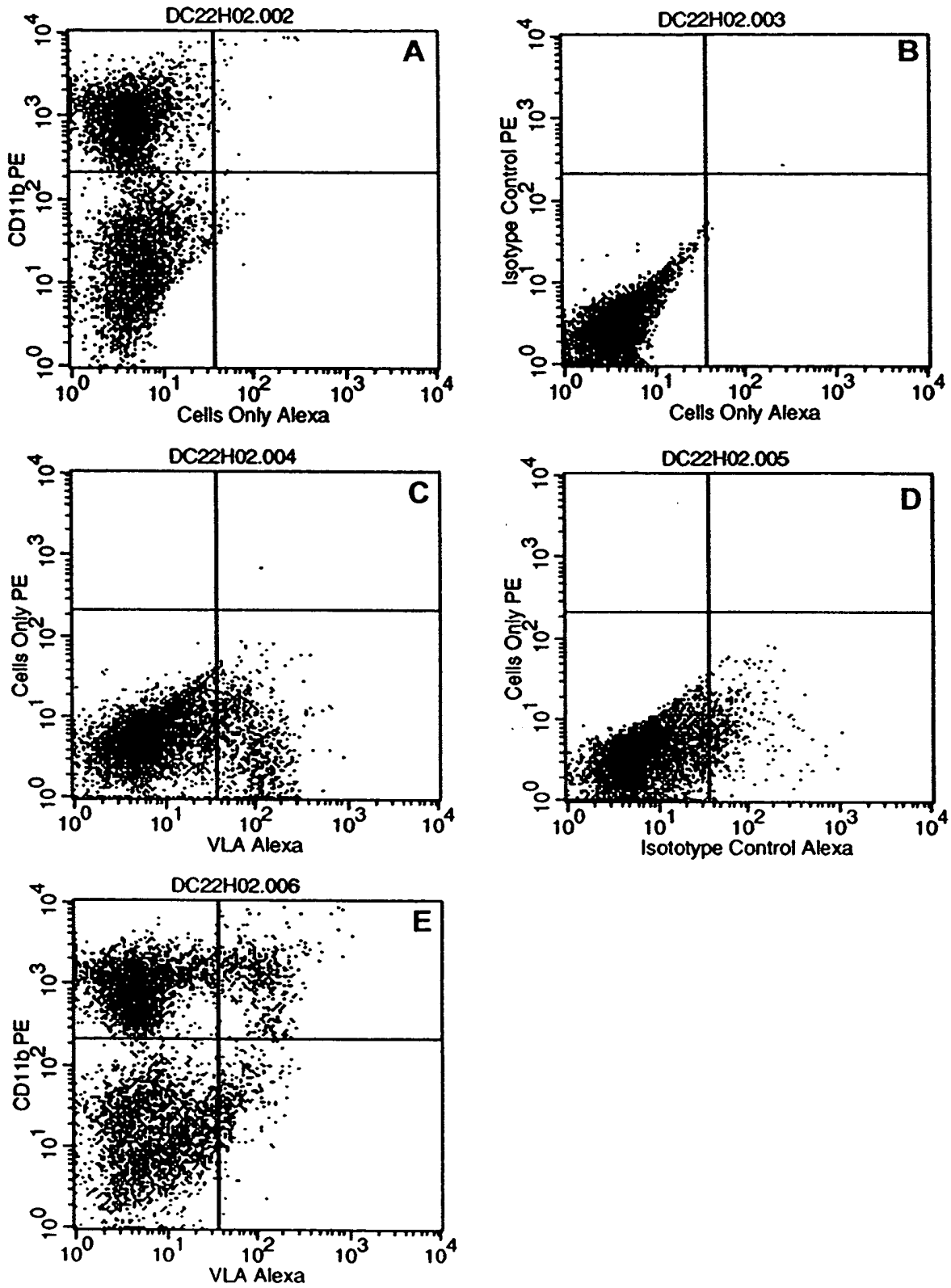


Figure 2

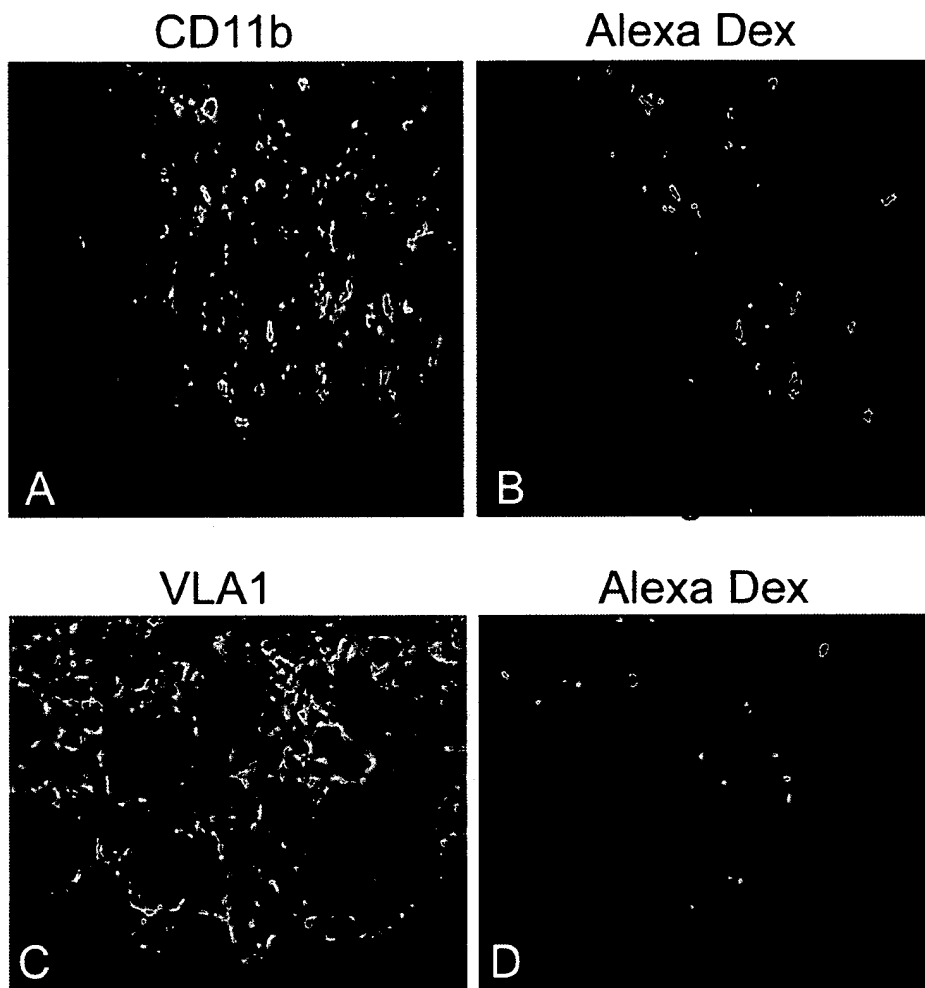


Figure 3

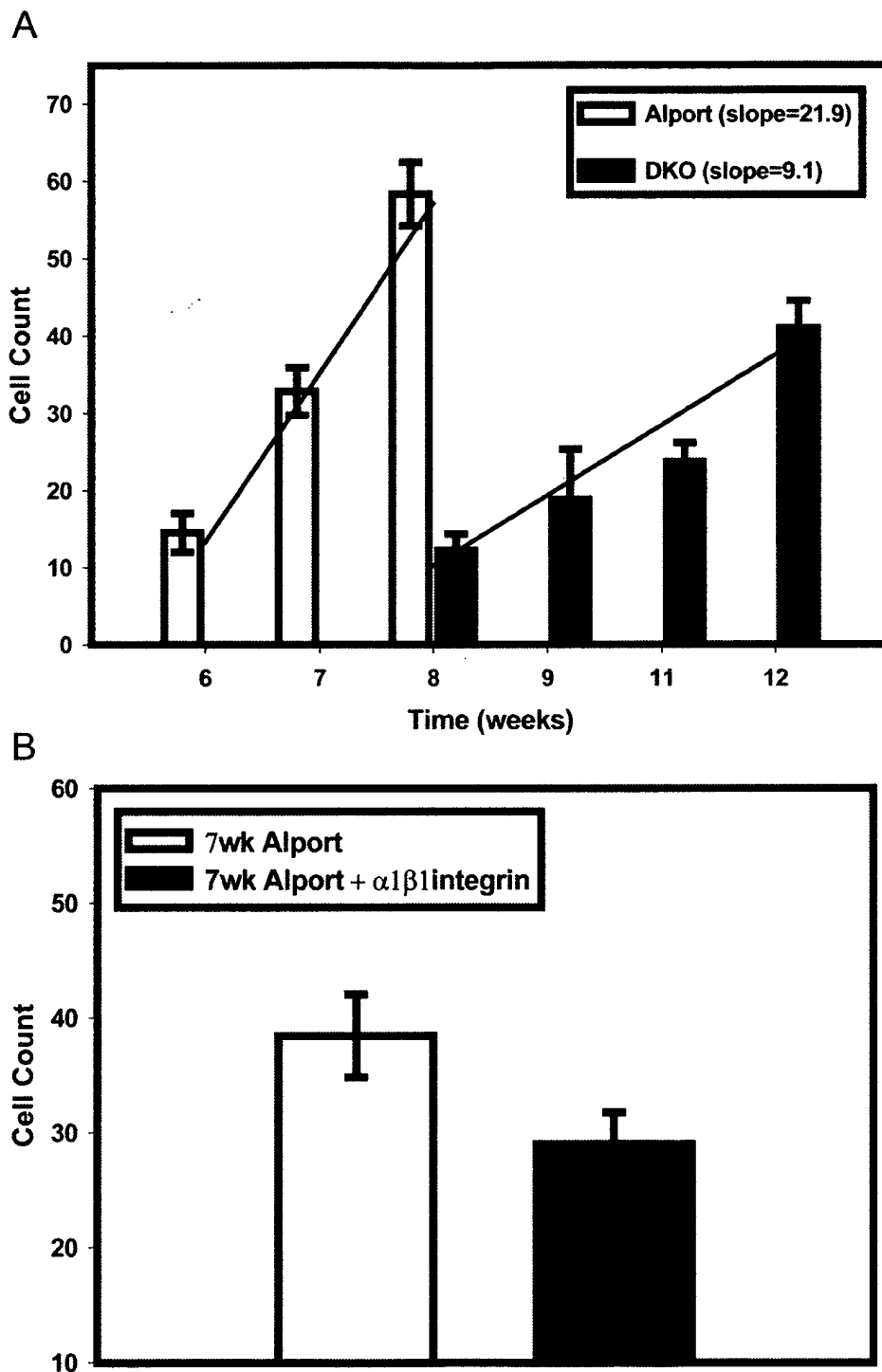


Figure 4

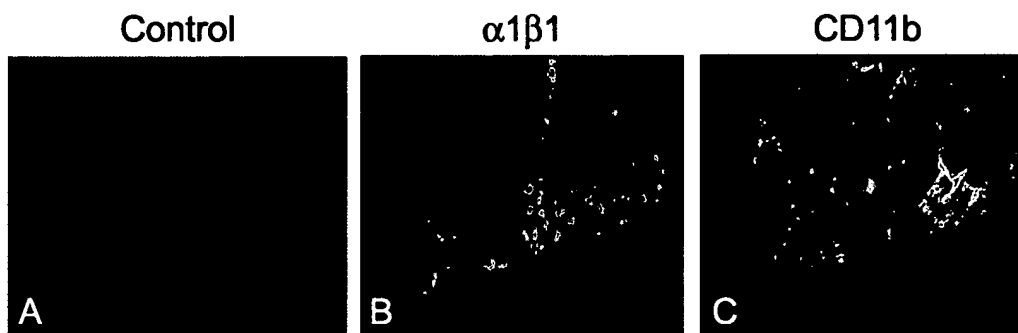


Figure 5

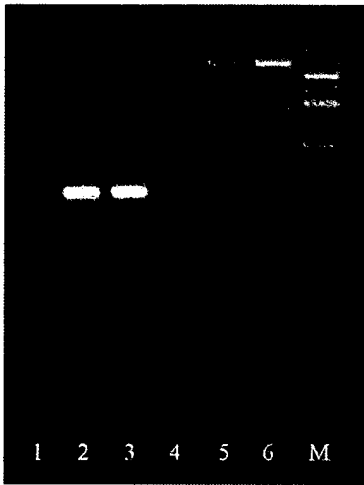


Figure 6

### MCP-1 induced VLA binding by endothelial cells (n=2)

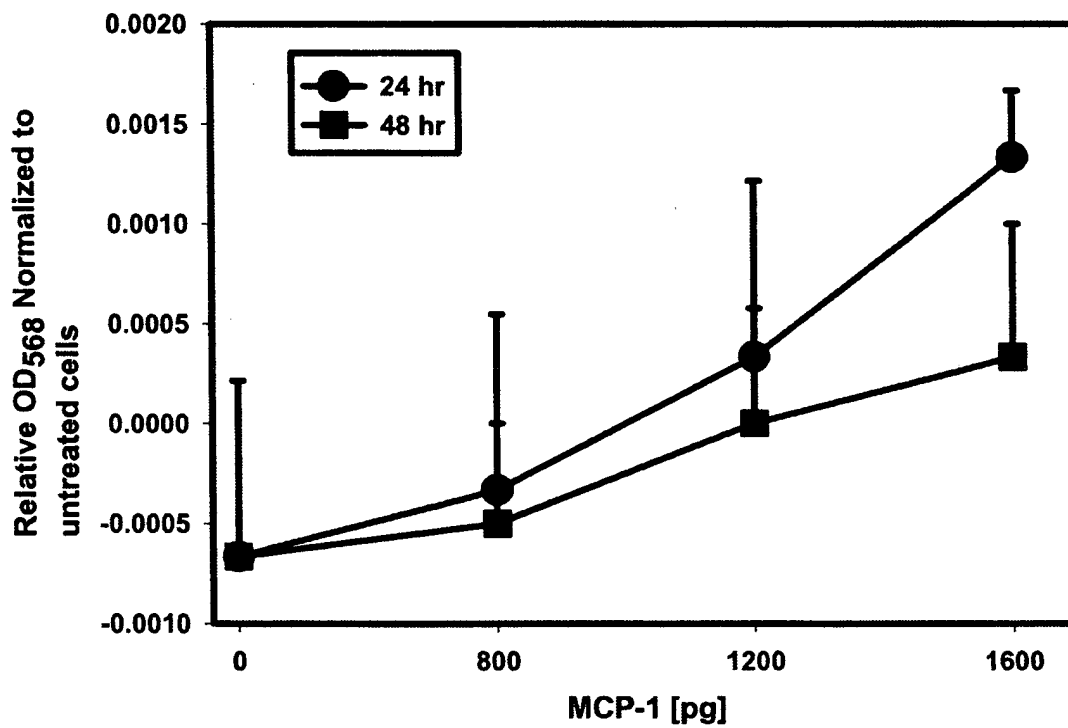


Figure 7

### H<sub>2</sub>O<sub>2</sub> treated endothelial cells Time course and conc curve of induced binding to Recombinant human VLA1-Alexa568

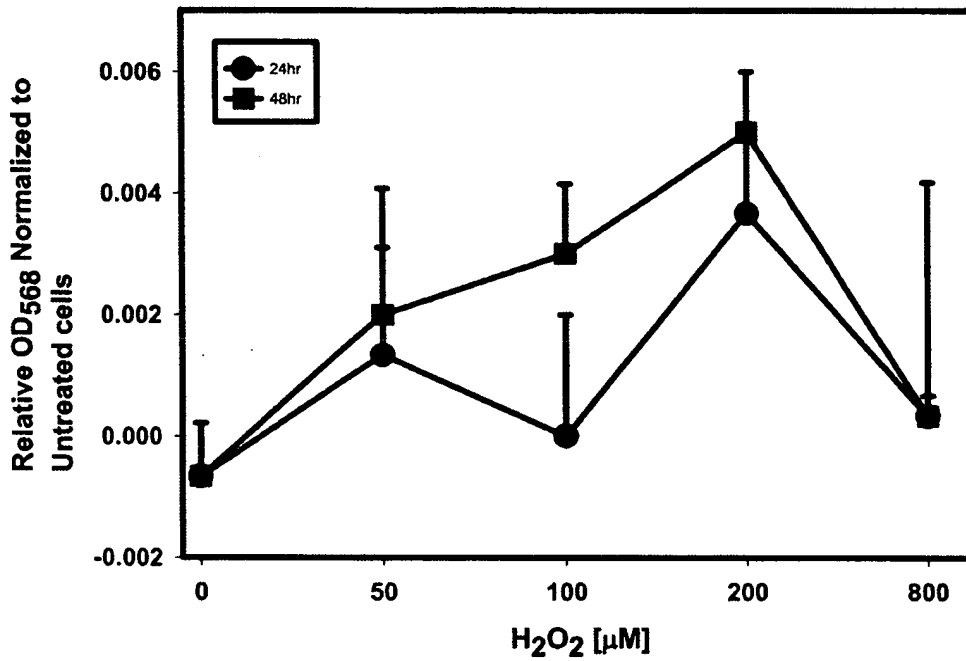


Figure 8



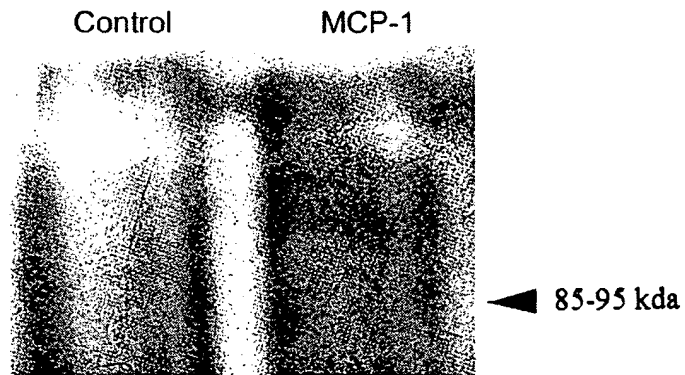


Figure 9

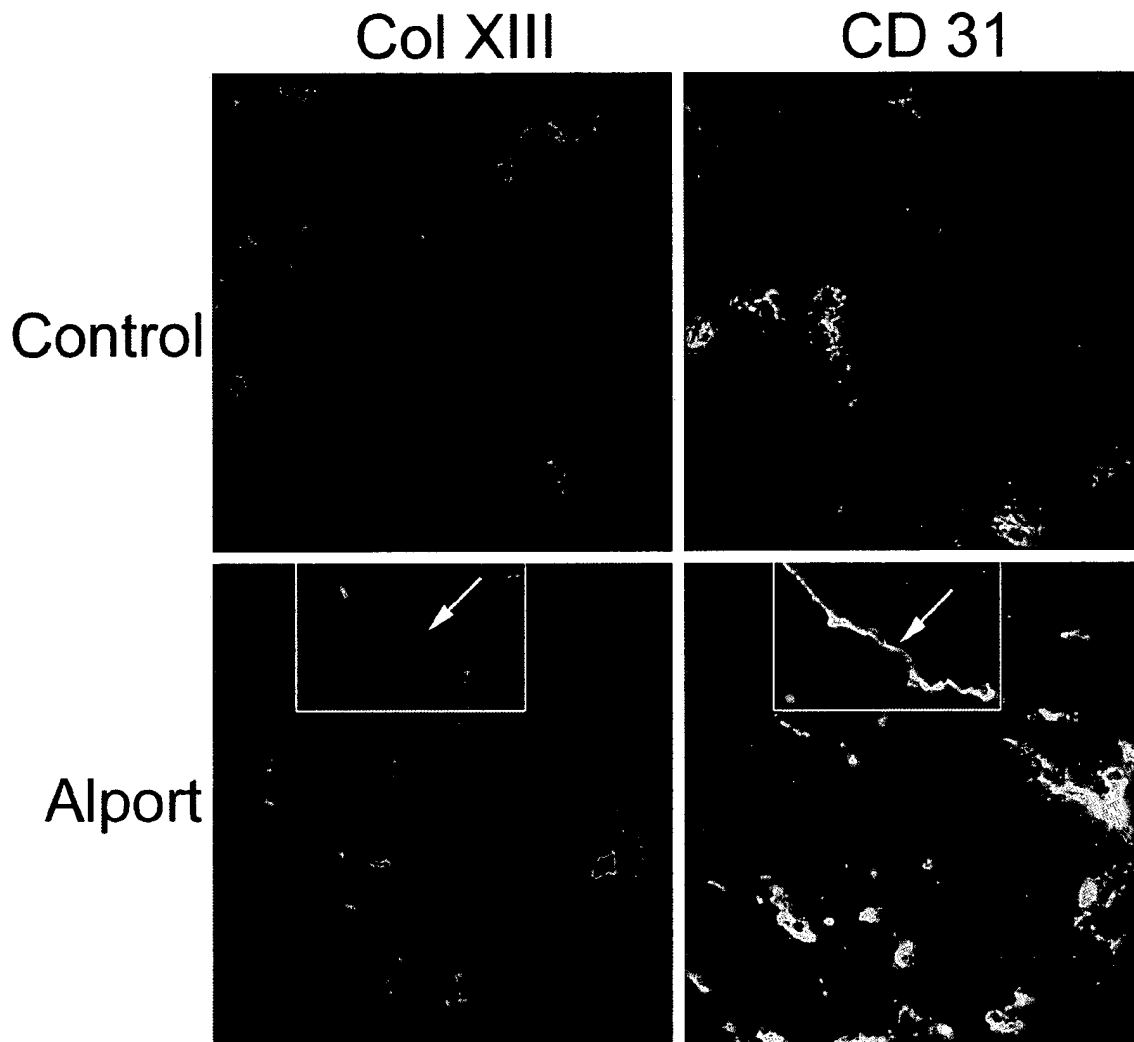


Figure 10

**This Page is Inserted by IFW Indexing and Scanning  
Operations and is not part of the Official Record**

## **BEST AVAILABLE IMAGES**

Defective images within this document are accurate representations of the original documents submitted by the applicant.

Defects in the images include but are not limited to the items checked:

- BLACK BORDERS**
- IMAGE CUT OFF AT TOP, BOTTOM OR SIDES**
- FADED TEXT OR DRAWING**
- BLURRED OR ILLEGIBLE TEXT OR DRAWING**
- SKEWED/SLANTED IMAGES**
- COLOR OR BLACK AND WHITE PHOTOGRAPHS**
- GRAY SCALE DOCUMENTS**
- LINES OR MARKS ON ORIGINAL DOCUMENT**
- REFERENCE(S) OR EXHIBIT(S) SUBMITTED ARE POOR QUALITY**
- OTHER: \_\_\_\_\_**

**IMAGES ARE BEST AVAILABLE COPY.**

**As rescanning these documents will not correct the image problems checked, please do not report these problems to the IFW Image Problem Mailbox.**